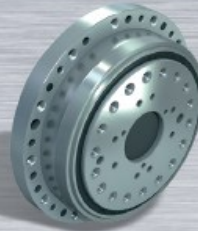


The name „**TWINSPIN**“ designates the full integration of high-precision reduction gear and radial-axial bearing in a compact unit.



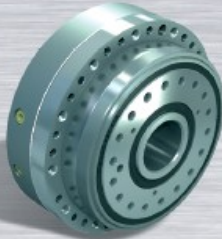
### ● T SERIES

A standard version of the high precision reduction gear TwinSpin with through and threaded holes in the case.



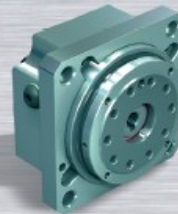
### ● E SERIES

Compact unit with flange alike design. Suitable solution for robotics.



### ● H SERIES

Hollow shaft-reducer with possibility of sealing, where a big through hole in the shaft enables passing of cables, tubing or additional shafts to other axes.



### ● M SERIES

Mini version of high precision reduction gears TwinSpin. In its category it represents the best solution in the market.

**Company address:**

SPINEA, s.r.o.  
Okrajová 33  
080 05 Prešov  
SLOVAKIA, EU

**Phone contacts:**

+421 51 770 01 56

**Fax:**

+421 51 748 20 80

**E-mail:**

info@spinea.sk  
sales@spinea.sk

[www.spinea.sk](http://www.spinea.sk)

**Location of company:**



 **SPINEA**

**IN ROBOTICS**

**AND AUTOMATION**

*Excellence in motion*

# Applications of high precision reduction gears TwinSpin in robotics

## 6-AXIS robots



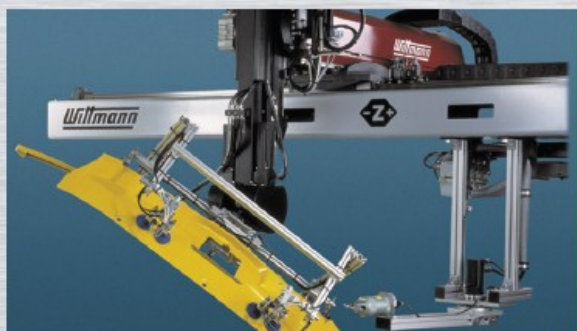
- High positioning precision
- Smooth run, low vibrations
- Wide range of torques (18 to 4500Nm) possibly covering all 6 axis
- Wide range of sizes and ratios
- Excellent wrist axis solution

## SCARA robots



- Excellent dynamic performance
- High torsional and tilting stiffness
- Smooth run, low vibrations
- Compact design, easy installation
- Reliability and long lifetime

## GANTRY robots



- High torsional and tilting stiffness
- High power density
- Excellent dynamic performance
- Compact design, easy installation
- Reliability and long lifetime

## MANIPULATORS



- High power density
- High positioning precision
- High torsional and tilting stiffness
- Compact design, easy installation
- Reliability and long lifetime

## Other applications

- Service robotics
- Humanoid robotics
- Security robotics
- Medical robotics
- Broadcasting robotics
- AGV
- Welding positioners
- Rotary tables
- Transportation systems
- Pallet changers

## References



And more...