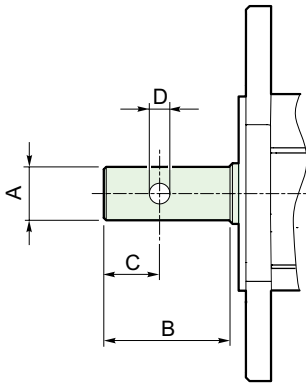


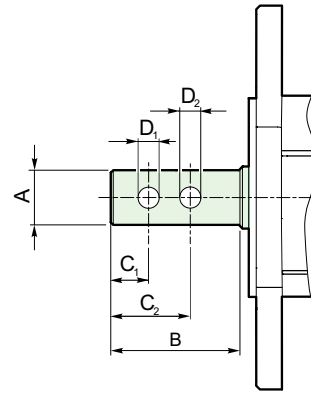
# Gearboxes RP

## Dimensions [inch]

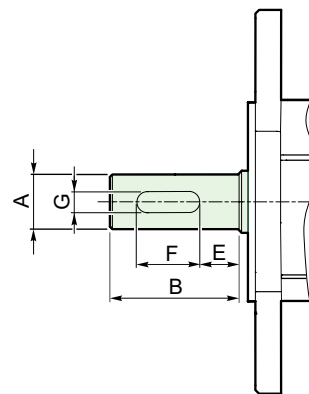
### Output shafts



A	B	C	D (H11)	Shaft ID
$\emptyset 0.63$ <sup>0</sup> <sub>-0.002</sub>	1,97	0,83	0,26	910.007
$\emptyset 0.63$ <sup>0</sup> <sub>-0.002</sub>	1,97	0,83	0,28	910.018
$\emptyset 0.74$ <sup>0</sup> <sub>-0.004</sub>	3,15	0,59	0,33	920.008
$\emptyset 0.75$ <sup>0</sup> <sub>-0.002</sub>	2,24	0,91	0,26	910.001
$\emptyset 0.75$ <sup>0</sup> <sub>-0.002</sub>	2,24	0,91	0,26	910.017
$\emptyset 0.75$ h7	1,57	0,55	0,26	920.006
$\emptyset 0.78$ <sup>+0.002</sup> <sub>-0.002</sub>	3,94	1,97	0,24	920.016
$\emptyset 0.79$ h7	3,31	1,18	0,24	920.013
$\emptyset 0.79$ <sup>0</sup> <sub>-0.008</sub>	2,05	0,91	0,26	920.022
$\emptyset 0.83$ <sup>0</sup> <sub>-0.004</sub>	2,05	0,91	0,24	920.012
$\emptyset 0.83$ <sup>0</sup> <sub>-0.002</sub>	2,24	0,91	0,24	910.024
$\emptyset 0.87$ <sup>0</sup> <sub>-0.004</sub>	3,15	0,59	0,33	920.011
$\emptyset 0.87$ <sup>0</sup> <sub>-0.002</sub>	2,24	0,91	0,33	910.004



A	B	C <sub>1</sub>	C <sub>2</sub>	D <sub>1</sub> (H11)	D <sub>2</sub> (H11)	Shaft ID
$\emptyset 0.75$ <sup>0</sup> <sub>-0.002</sub>	2,24	0,91	1,50	0,26	0,26	910.015
$\emptyset 0.75$ <sup>0</sup> <sub>-0.008</sub>	3,62	1,18	1,89	0,33	0,33	910.002
$\emptyset 0.78$ <sup>+0.002</sup> <sub>-0.002</sub>	3,94	1,18	1,97	0,24	0,24	910.014
$\emptyset 0.79$ <sup>0</sup> <sub>-0.002</sub>	2,95	1,46	2,09	0,28	0,28	910.005
$\emptyset 0.79$ h7	2,83	0,79	1,57	0,31	0,26	920.023
$\emptyset 0.87$ <sup>0</sup> <sub>-0.008</sub>	2,05	0,91	1,50	0,26	0,26	910.009



A	B	E	F	G	Shaft ID
					910.003
$\emptyset 0.75$ h6	1,57	0,20	1,18	0,24	910.019
					920.003

Note: Output shaft/flange selection: see pag.

